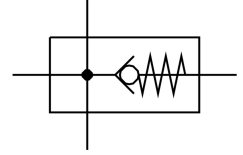


Branching module MS6-FRM-1/2-I

Part number: 536969

FESTO



Data sheet

| Feature | Value |
|--|--|
| Mounting position | Any |
| Structural design | Branching module with non-return function |
| Operating pressure | 0 bar...20 bar |
| Standard nominal flow rate in main flow direction 1 -> 2 | 6000 l/min |
| Standard nominal flow rate outlet at top | 3100 l/min |
| Standard nominal flow rate outlet down | 3300 l/min |
| Operating voltage range AC | 0 V...250 V |
| DC operating voltage range | 0 V...125 V |
| Operating medium | Compressed air as per ISO 8573-1:2010 [7:4:4] Inert gas |
| Information on operating and pilot media | Operation with oil lubrication possible (required for further use) |
| Corrosion resistance class (CRC) | 2 - Moderate corrosion stress |
| LABS (PWIS) conformity | VDMA24364-B1/B2-L |
| Storage temperature | -10 °C...60 °C |
| For use in the food industry | See supplementary material information |
| Temperature of medium | -10 °C...60 °C |
| Ambient temperature | -10 °C...60 °C |
| Product weight | 400 g |
| Pneumatic connection 1 | G1/2 |
| Pneumatic connection 2 | G1/2 |
| Pneumatic connection 3 | G1/2 |
| Pneumatic connection 4 | G1/2 |
| Note on materials | RoHS-compliant |
| Housing material | Die-cast aluminum |