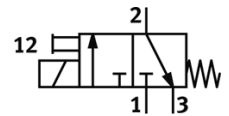
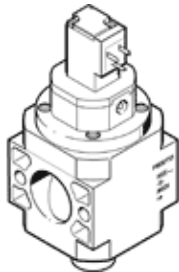


# start valve HEE-D-MAXI-24-EX

Part number: 536686

FESTO

For service units, without threaded connection plates with FRB threaded pin



## Data sheet

Feature	Value
Design structure	Piston slide
Type of actuation	electrical
Sealing principle	soft
Exhaust-air function	not throttleable
Manual override	detenting
Type of reset	mechanical spring
Type of piloting	Piloted
Valve function	3/2 closed, monostable
Working pressure	2.5 ... 16 bar
Duty cycle	100%
Characteristic coil data	24V DC: 2,5W
Permissible voltage fluctuation	+/- 10 %
Operating medium	Compressed air in accordance with ISO8573-1:2010 [7:4:4] Inert gases
Note on operating and pilot medium	Lubricated operation possible (subsequently required for further operation)
Corrosion resistance classification CRC	2
Materials note	Conforms to RoHS
Medium temperature	-10 ... 60 °C
Ambient temperature	-10 ... 60 °C
Authorization	Germanischer Lloyd
ATEX category Gas	II 3G
Explosion ignition protection type Gas	Ex nA II T4 X
ATEX category Dust	II 3D
Explosion ignition protection type Dust	Ex tD A22 IP65 T130°C X
Explosion-proof ambient temperature	-10°C ≤ Ta ≤ +60°C
CE symbol (see declaration of conformity)	according to EU-Ex protection guideline (ATEX)
Mounting type	Line installation with accessories
Assembly position	Any
Flow direction	non reversible
Product weight	800 g
Pneumatic connection, port 3	G3/8
Air purity class at output	Compressed air in accordance with ISO8573-1:2010 [7:4:4] Inert gases
Pilot air supply	Internal
Electrical connection	Plug Per DIN EN 175301-803 Design C
Materials information for seals	NBR
Materials information, housing	Aluminum die cast