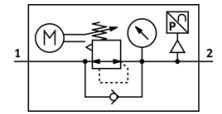


Electrical pressure regulator MS6-LRE-1/2-D7-PU-Z

Part number: 536547

FESTO

Indirectly controlled regulators, working pressure up to 12 bar.



Data sheet

Feature	Value
Size	6
Series	MS
Assembly position	Preferably vertical Any
Design structure	Electrically adjustable pressure regulator
Short circuit strength	for all electrical connections
Controller function	Output pressure constant with initial pressure compensation with secondary exhaust
Pressure gauge	with pressure gauge
Working pressure	0.8 ... 20 bar
Pressure control range	0.5 ... 12 bar
Max. pressure hysteresis	0.25 bar
Standard nominal flow rate	5,500 l/min
Analog output	0 - 10 V
Duration of control at 25 °C	Max. 90 s
Type of inputs	Per IEC 61131-2 No electrical isolation
Nominal operating voltage DC	24 V
Current consumption at nominal operating voltage	Max. 1 A
Current consumption	Max. 3.5 A at 24 VDC
Control duration/ interval ratio	1:3
Permissible voltage fluctuation	+/- 10 %
Operating medium	Compressed air in accordance with ISO8573-1:2010 [7:4:4]
CE symbol (see declaration of conformity)	according to EU-EMV guideline
Corrosion resistance classification CRC	2
Storage temperature	-10 ... 50 °C
Medium temperature	0 ... 50 °C
Protection class	IP65
Ambient temperature	0 ... 50 °C
Product weight	1,280 g
Analog outputs, absolute accuracy at 25 °C	± 3%
Cable interface	Input: M12x1 plug, 5-pin Output: M8x1 plug, 3-pin
Mounting type	Optional Line installation with accessories
Pneumatic connection, port 1	G1/2
Pneumatic connection, port 2	G1/2
Materials information for seals	NBR
Materials information, housing	Aluminum die cast
Materials information for membrane	NBR