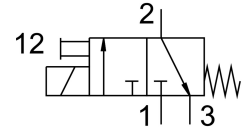
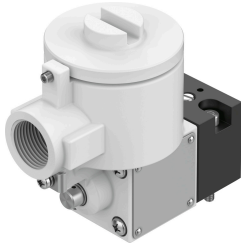


Pilot valve MGXDH-3/2-1.2-230AC-EX

Part number: 535617

FESTO



Data sheet

Feature	Value
Valve function	3/2, closed, monostable
Actuation type	Electrical
Operating pressure	-0.09 MPa...0.8 MPa -0.9 bar...8 bar -13.05 psi...116 psi
Structural design	Shut off valve
Reset method	Mechanical spring
CE marking (see declaration of conformity)	as per EU explosion protection directive (ATEX)
Explosion protection certification outside the EU	EPL Db (CN) EPL Db (IEC-EX) EPL Gb (CN) EPL Gb (IEC-EX)
Certificate issuing authority	ATEX: CML 15 ATEX 1119X CCC-Ex: 2020322307001701 IEC: IECEx CML 17.0147X
ATEX category gas	II 2G
ATEX category for dust	II 2D
Type of ignition protection for gas	ATEX: Ex db IIC T4 Gb CCC-Ex: Ex d IIC T3/T6 Gb
Type of (ignition) protection for dust	Ex tb IIIC T135°C Db
Explosive ambient temperature	ATEX: -65°C ≤ Ta ≤ +40°C CCC-Ex: -20°C ≤ Ta ≤ +40°C
Degree of protection	IP66
Manual override	Detenting
Flow direction	Non-reversible
Duty cycle	100%
Insulation class	H
Coil characteristics	230 V AC: 50/60 Hz, initial power 10.0 VA, holding power 6.0 VA
Permissible frequency fluctuations	+/- 10%

Feature	Value
Explosion prevention and protection	Zone 1 (ATEX) Zone 1 (CN) Zone 1 (IEC-EX) Zone 2 (ATEX) Zone 21 (ATEX) Zone 21 (CN) Zone 21 (IEC-EX) Zone 22 (ATEX)
Operating medium	Compressed air as per ISO 8573-1:2010 [7:4:4]
Information on operating and pilot media	Operation with oil lubrication possible (required for further use)
Corrosion resistance class (CRC)	2 - Moderate corrosion stress
LABS (PWIS) conformity	VDMA24364 zone III
Ambient temperature	-20 °C...80 °C
Type of mounting	CNOMO
Note on materials	RoHS-compliant