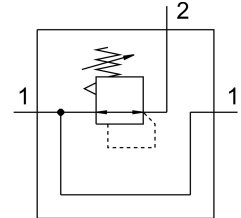
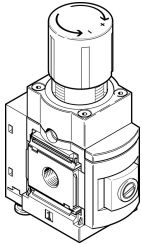


Precision pressure regulator MS6-LRPB-1/2-D7-A8-BD

Part number: 534874

FESTO



Data sheet

Feature	Value
Size	6
Series	MS
Actuator lock	Rotary knob with detent
Mounting position	Any
Structural design	Pilot-controlled precision diaphragm regulator
Controller function	Outlet pressure constant With secondary exhausting
Pressure gauge	G1/8 prepared
Operating pressure	0.1 MPa...1.4 MPa 1 bar...14 bar
Pressure regulation range	0.1 bar...12 bar
Max. pressure hysteresis	0.02 bar
Flow rate of secondary venting	900 l/min
Standard nominal flow rate	5000 l/min
Operating medium	Compressed air as per ISO 8573-1:2010 [7:4:4] Inert gas
Information on operating and pilot media	Operation with oil lubrication not possible
Corrosion resistance class (CRC)	2 - Moderate corrosion stress
LABS (PWIS) conformity	VDMA24364-B1/B2-L
Storage temperature	-10 °C...60 °C
Temperature of medium	-10 °C...60 °C
Ambient temperature	-10 °C...60 °C
Product weight	1000 g
Type of mounting	Optionally: Front panel mounting Line installation With accessories
Pneumatic connection 1	G1/2
Pneumatic connection 2	G1/2
Pneumatic connection 3	G1/4
Note on materials	RoHS-compliant
Seals material	NBR

Feature	Value
Housing material	Aluminum