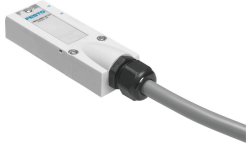


# Connecting cable VMPA-KMS1-8-2.5

Part number: 533195

FESTO



## Data sheet

Feature	Value
Based on norm	DIN 41652
Cable designation	With accessories
Contact durability	50
Product weight	287 g
Electrical connection 1, function	Field device end
Electrical connection 1, design	Rectangular
Electrical connection 1, connection type	Socket
Electrical connection 1, cable outlet	Angled
Electrical connection 1, connection technology	Sub-D
Electrical connection 1, number of pins/wires	25
Electrical connection 1, occupied pins/wires	9
Electrical connection 1, type of mounting	3x M3 screw
Electrical connection 2, function	Control side
Electrical connection 2, connection type	Cable
Electrical connection 2, connection technology	Open end
Electrical connection 2, number of pins/wires	10
Electrical connection 2, occupied pins/wires	9
DC operating voltage range	0 V...30 V
Nominal operating voltage DC	24 V
Current rating	3 A
Surge resistance	1 kV
Cable length	2.5 m
Cable characteristic	Standard
Connector cable test conditions	Test conditions on request
Bending radius, fixed cable installation	28.4 mm
Bending radius, flexible cable installation	71.5 mm
Cable fitting	M20x1.5
Cable diameter	7.15 mm
Cable diameter tolerance	± 0.3 mm
Cable design	10 x 0.34 mm <sup>2</sup>
Nominal conductor cross section	0.34 mm <sup>2</sup>

<b>Feature</b>	<b>Value</b>
Wire ends	Cut off bluntly
Degree of protection	IP65 as per IEC 60529
Note on degree of protection	In mounted state
Ambient temperature	-25 °C...80 °C
Ambient temperature with flexible cable installation	-5 °C...70 °C
CE marking (see declaration of conformity)	As per EU RoHS directive
UKCA marking (see declaration of conformity)	To UK RoHS instructions
LABS (PWIS) conformity	VDMA24364-B2-L
Note on materials	RoHS-compliant
Contamination level	3
Corrosion resistance class (CRC)	2 - Moderate corrosion stress
Material of cable sheath	PVC
Color cable sheath	Gray
Housing material	PA
Housing colour	Gray
Material of union nut	PA
Seals material	CR NBR
Material of pin contacts	Copper alloy, gold-plated