

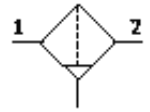
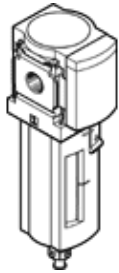
# Activated carbon filter

## MS6N-LFX-1/2-U-Z

Part number: 531930

FESTO

Metal bowl, direction of flow: from right to left.



### Data sheet

Feature	Value
Size	6
Series	MS
Assembly position	Vertical +/- 5°
Design structure	Active carbon filter
Bowl guard	Metal bowl guard
Inlet pressure 1	0 ... 20 bar
Standard nominal flow rate	1,200 l/min
Operating medium	Filtered, unlubricated compressed air, 0.01 µm filtration
Corrosion resistance classification CRC	2
Storage temperature	-10 ... 60 °C
Air purity class at output	1.7.1 per DIN ISO 8573-1
Medium temperature	5 ... 30 °C
Residual oil content	0.003 mg/m <sup>3</sup>
Ambient temperature	-10 ... 60 °C
Product weight	820 g
Mounting type	with accessories Optional Line installation
Pneumatic connection, port 1	NPT1/2-14
Pneumatic connection, port 2	NPT1/2-14
Materials information for filter	Active carbon
Materials information, housing	Aluminum die cast
Materials information for bowl	Wrought Aluminum alloy