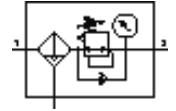


Filter regulator MS6N-LFR-1/2-D7-CRV-AS-Z

Part number: 531291

FESTO

Maximum output pressure 12 bar, 5 µm filter, with pressure gauge, lockable regulator head, plastic bowl with plastic bowl guard, fully automatic condensate drain, flow direction from right to left.



Data sheet

| Feature | Value |
|---|---|
| Size | 6 |
| Series | MS |
| Actuator lock | with accessories, lockable |
| Assembly position | Vertical +/- 5° |
| Grade of filtration | 5 µm |
| Condensate drain | fully automatic |
| Design structure | Filter regulator with pressure gauge |
| Max. condensate volume | 38 ml |
| Controller function | Output pressure constant with secondary exhaust |
| Bowl guard | Plastic guard |
| Pressure gauge | with pressure gauge |
| Pressure control range | 0.5 ... 12 bar |
| Inlet pressure 1 | 2 ... 12 bar |
| Max. pressure hysteresis | 0.25 bar |
| Standard nominal flow rate | 4,000 l/min |
| Operating medium | Compressed air |
| Corrosion resistance classification CRC | 2 |
| Storage temperature | -10 ... 60 °C |
| Air purity class at output | 3.7.- per DIN ISO 8573-1 |
| Medium temperature | 5 ... 60 °C |
| Ambient temperature | 5 ... 60 °C |
| Product weight | 875 g |
| Mounting type | with accessories Optional Front panel installation Line installation |
| Pneumatic connection, port 1 | NPT1/2-14 |
| Pneumatic connection, port 2 | NPT1/2-14 |
| Materials information for seals | NBR |
| Materials information, housing | Aluminum die cast |
| Materials information for bowl | PC |
| Material information, isolating disc | POM |