

# Pressure gauge

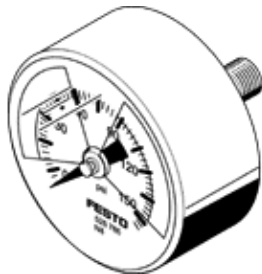
## MA-50-145-N1/4-PSI-E-RG

Part number: 530390

FESTO

With display unit in psi, adjustable red/green range.

This product is only available if ordered from the Festo Corporation, USA.



## Data sheet

Feature	Value
Indicating range [psi]	0 ... 145 psi
Conforms to standard	EN 837-1
Nominal size of pressure gauge	50
Design structure	Bourdon-tube pressure gauge
Mounting type	Line installation
Operating medium	Inert gases Neutral fluids
Working pressure	0 ... 145 Psi
Alternating load factor	0.66
Measurement accuracy class	2,5
Protection class	IP43
Medium temperature	-20 ... 60 °C
Ambient temperature	-20 ... 60 °C
Materials note	Conforms to RoHS
Position of connection	Rear side central
Pneumatic connection	NPT1/4-18
Materials in contact with media	Brass
Materials information for screw-in stud	Brass
Materials information, housing	ABS
Materials info, viewing window	PMMA
Housing color	Black
Product weight	75 g
Note on operating and pilot medium	No oxygen No acetylene