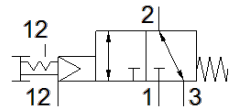
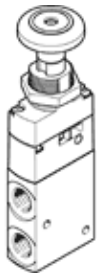


Push-button valve VHEF-PTCZ-B32-G14

Part number: 5299714

FESTO



Data sheet

| Feature | Value |
|---|---|
| Valve function | 3/2 bistable |
| Type of actuation | manual |
| Width | 20 mm |
| Standard nominal flow rate | 870 l/min |
| Operating pressure MPa | -0.095 ... 1 MPa |
| Working pressure | -0.95 ... 10 bar |
| Design structure | Poppet seat |
| Nominal size | 6 mm |
| Exhaust-air function | throttleable |
| Instructions for use | Actuate only manually |
| Sealing principle | soft |
| Assembly position | Any |
| Manual override | detenting |
| Type of piloting | Piloted |
| Pilot air supply | external |
| Flow direction | reversible |
| Lap | Zero overlap |
| Pilot pressure MPa | 0.3 ... 1 MPa |
| Pilot pressure | 3 ... 10 bar 43.5 ... 145 psi |
| Max. switching frequency | 0.5 Hz |
| Operating medium | Compressed air in accordance with ISO8573-1:2010 [7:-:-] |
| Note on operating and pilot medium | Lubricated operation possible (subsequently required for further operation) |
| Corrosion resistance classification CRC | 1 - Low corrosion stress |
| PWIS conformity | VDMA24364-B1/B2-L |
| Medium temperature | -10 ... 60 °C |
| Ambient temperature | -10 ... 60 °C |
| Actuating force | 20 N |
| Release force | 25 N |
| Product weight | 161 g |
| Mounting type | Front panel installation with through hole Optional |
| Auxiliary pilot air port 12/14 | M5 |
| Pilot air port 12 | M5 |
| Pneumatic connection, port 1 | G1/4 |
| Pneumatic connection, port 2 | G1/4 |
| Pneumatic connection, port 3 | G1/4 |
| Materials note | Conforms to RoHS |
| Material cover | PA-reinforced |
| Material seals | NBR |
| Material housing | Anodised wrought aluminium alloy |