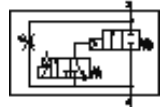


# Pressure build-up valve MS4-DE-1/8-V110-Z

Part number: 529526

FESTO

Electrical, for gradual pressure build-up, direction of flow: from right to left.



## Data sheet

Feature	Value
Exhaust-air function	throttleable
Type of actuation	electrical
Assembly position	Any
Manual override	detenting Pushing
Design structure	Piston seat
Type of reset	mechanical spring
Type of piloting	Piloted
Pilot air supply	external
Flow direction	non reversible
Valve function	2/2
Switching position indicator	with accessories
Working pressure	4 ... 14 bar
b value	0.5
C value	4.6 l/sbar
Standard nominal flow rate	1,000 l/min
Characteristic coil data	110V AC
Corrosion resistance classification CRC	2
Medium temperature	-10 ... 60 °C
Ambient temperature	-10 ... 60 °C
Product weight	263 g
Electrical connection	Design C
Mounting type	with accessories Optional Line installation
Pneumatic connection, port 1	G1/8
Pneumatic connection, port 2	G1/8
Materials note	Free of copper and PTFE
Materials information for seals	NBR
Materials information, housing	Aluminum die cast