

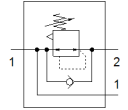
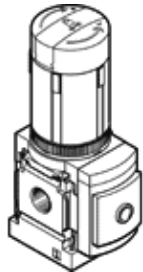
Pressure regulator

MS4-LRB-1/4-D6-A8-AS

Part number: 529477

FESTO

For manifold assembly, maximum output pressure 7 bar, with adapter G1/8 for pressure gauge acc. to EN 837, port P2 on reverse side.



Data sheet

Feature	Value
Size	4
Series	MS
Actuator lock	Rotary knob with lock with accessories, lockable
Assembly position	Any
Design structure	directly-controlled diaphragm regulator with looped-through compressed air supply
Controller function	Output pressure constant with initial pressure compensation with secondary exhaust with return flow
Pressure gauge	Prepared for G1/8
Working pressure	0.8 ... 14 bar
Pressure regulation range	0.3 ... 7 bar
Max. pressure hysteresis	0.25 bar
Standard nominal flow rate	1,700 l/min
Operating medium	Compressed air in accordance with ISO8573-1:2010 [7:4:4] Inert gases
Note on operating and pilot medium	Lubricated operation possible (subsequently required for further operation)
Corrosion resistance classification CRC	2 - Moderate corrosion stress
PWIS conformity	VDMA24364-B1/B2-L
Storage temperature	-10 ... 60 °C
Food-safe	See Supplementary material information
Medium temperature	-10 ... 60 °C
Ambient temperature	-10 ... 60 °C
Product weight	222 g
Mounting type	Front panel installation Line installation with accessories Optional
Pneumatic connection, port 1	G1/4
Pneumatic connection, port 2	G1/4
Materials note	Conforms to RoHS
Material of connecting plate	Aluminum die cast
Material control panel	PA POM
Material seals	NBR
Material housing	Aluminum die cast
Material membrane	NBR