

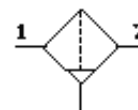
# Filter

## MS4-LF-1/8-ERM-Z

Part number: 529408

FESTO

40 µm filter, plastic bowl with plastic bowl guard, manual condensate drain, direction of flow: from right to left.



### Data sheet

Feature	Value
Size	4
Series	MS
Assembly position	Vertical +/- 5°
Grade of filtration	40 µm
Condensate drain	manual rotary
Design structure	Sintered filter with centrifugal separator
Max. condensate volume	19 ml
Bowl guard	Plastic guard
Inlet pressure 1	0 ... 14 bar
Standard nominal flow rate	1,100 l/min
Operating medium	Compressed air
Corrosion resistance classification CRC	2
Storage temperature	-10 ... 60 °C
Air purity class at output	5:7:- per DIN ISO 8573-1
Medium temperature	-10 ... 60 °C
Ambient temperature	-10 ... 60 °C
Product weight	189 g
Mounting type	with accessories Optional Line installation
Pneumatic connection, port 1	G1/8
Pneumatic connection, port 2	G1/8
Materials note	Free of copper and PTFE
Materials information for seals	NBR
Materials information for filter	PE
Materials information, housing	Aluminum die cast
Materials information for bowl	PC