

Solenoid valve

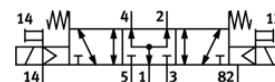
CPPSC1-M1H-B-H-Q3

Part number: 527343
Product to be discontinued

FESTO

For valve terminal CPA-SC, QS push-in connector on top, with plug connection at rear.

Type to be discontinued. Available until 2014. See Support Portal for alternative products.



Data sheet

| Feature | Value |
|---|---|
| Valve function | 5/3 pressurized |
| Type of actuation | electrical |
| Standard nominal flow rate | 140 l/min |
| Working pressure | -0.9 ... 10 bar |
| Design structure | Piston slide |
| Protection class | IP20 |
| Authorization | c UL us - Recognized (OL) |
| Exhaust-air function | throttleable |
| Sealing principle | soft |
| Assembly position | Any |
| Manual override | detenting Pushing |
| Type of piloting | Piloted |
| Flow direction | reversible |
| Switching position indicator | Yes |
| Pilot pressure | 3 ... 8 bar |
| b value | 0.42 |
| C value | 0.573 l/sbar |
| Switching time off | 25 ms |
| Switching time on | 10 ms |
| Characteristic coil data | 24V DC: 1W |
| Operating medium | Compressed air in accordance with ISO8573-1:2010 [7:4:4] |
| Note on operating and pilot medium | Lubricated operation possible (subsequently required for further operation) |
| CE symbol (see declaration of conformity) | according to EU-EMV guideline |
| Corrosion resistance classification CRC | 1 |
| Medium temperature | -5 ... 50 °C |
| Sound pressure level | 95 dB(A) |
| Pilot medium | Compressed air in accordance with ISO8573-1:2010 [7:4:4] |
| Ambient temperature | -5 ... 50 °C |
| Product weight | 40 g |
| Electrical connection | 3-pin Plug |
| Mounting type | with through hole |
| Pneumatic connection, port 1 | Subbase |
| Pneumatic connection, port 2 | QS-3 |
| Pneumatic connection, port 3 | Subbase |
| Pneumatic connection, port 4 | QS-3 |
| Pneumatic connection, port 5 | Subbase |
| Materials information for seals | FPM HNBR NBR |
| Materials information, housing | Aluminum die cast |