

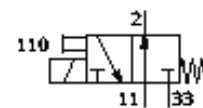
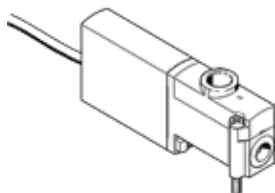
Solenoid valve

MHP4-MS1H-3/20-1/4-K

Part number: 525201

FESTO

individual valve, fast switching, with cable.



Data sheet

| Feature | Value |
|---|--|
| Valve function | 3/2 open, monostable |
| Type of actuation | electrical |
| Width | 18 mm |
| Standard nominal flow rate | 400 l/min |
| Working pressure | -0.9 ... 8 bar |
| Design structure | Pressure-relieved poppet valve |
| Type of reset | mechanical spring |
| Protection class | IP65 |
| Authorization | c UL us - Recognized (OL) |
| Nominal size | 4 mm |
| Grid dimension | 24 mm |
| Exhaust-air function | throttleable |
| Sealing principle | soft |
| Assembly position | Any |
| Manual override | Pushing |
| Type of piloting | direct |
| Flow direction | reversible with restrictions |
| Working pressure, reversible | -0.9 ... 0 bar |
| Maximum switching frequency | 210 Hz |
| Switching time off | 3.5 ms |
| Switching time on | 3.5 ms |
| Tolerance for Switching time OFF | +10%/-40% |
| Tolerance for Switching time ON | +10%/-30% |
| Measuring of the switching time at 1 Hz and above | 0.3 ms |
| Duty cycle | 100% |
| Characteristic coil data | 24 V DC: low current phase: 2.125 W, high current phase: 8.5 W |
| Permissible voltage fluctuation | +/- 10 % |
| Operating medium | Filtered, unlubricated compressed air, 40 µm filtration Filtered, lubricated compressed air, 40 µm filtration |
| CE symbol (see declaration of conformity) | according to EU-EMV guideline |
| Corrosion resistance classification CRC | 2 |
| Medium temperature | -5 ... 40 °C |
| Ambient temperature | -5 ... 40 °C |
| Product weight | 270 g |
| Electrical connection | Cable |
| Cable length | 2.5 m |
| Mounting type | On PR manifold |
| Pneumatic connection, 11 | Subbase |
| Pneumatic connection, port 2 | G1/4 |
| Pneumatic connection, 33 | Subbase |
| Materials note | Free of copper and PTFE |
| Materials information for seals | HNBR NBR |
| Materials information, housing | Zinc die-casting coated |
| Materials information, cable sheaths | PUR |
| Screw material data | Steel Galvanized |