

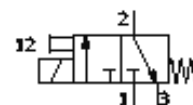
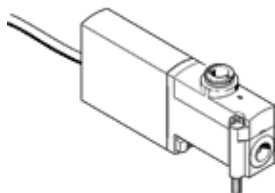
Solenoid valve

MHP4-MS1H-3/2G-QS-8-K

Part number: 525185

FESTO

individual valve, fast switching, with cable.



Data sheet

Feature	Value
Valve function	3/2 closed, monostable
Type of actuation	electrical
Width	18 mm
Standard nominal flow rate	400 l/min
Working pressure	-0.9 ... 8 bar
Design structure	Pressure-relieved poppet valve
Type of reset	mechanical spring
Protection class	IP65
Authorization	c UL us - Recognized (OL)
Nominal size	4 mm
Grid dimension	24 mm
Exhaust-air function	throttleable
Sealing principle	soft
Assembly position	Any
Manual override	Pushing
Type of piloting	direct
Flow direction	reversible with restrictions
Working pressure, reversible	-0.9 ... 0 bar
Maximum switching frequency	210 Hz
Switching time off	3.5 ms
Switching time on	3.5 ms
Tolerance for Switching time OFF	+10%/-40%
Tolerance for Switching time ON	+10%/-30%
Measuring of the switching time at 1 Hz and above	0.3 ms
Duty cycle	100%
Characteristic coil data	24 V DC: low current phase: 2.125 W, high current phase: 8.5 W
Permissible voltage fluctuation	+/- 10 %
Operating medium	Filtered, unlubricated compressed air, 40 µm filtration Filtered, lubricated compressed air, 40 µm filtration
CE symbol (see declaration of conformity)	according to EU-EMV guideline
Corrosion resistance classification CRC	2
Medium temperature	-5 ... 40 °C
Ambient temperature	-5 ... 40 °C
Product weight	270 g
Electrical connection	Cable
Cable length	2.5 m
Mounting type	On PR manifold
Pneumatic connection, port 1	Subbase
Pneumatic connection, port 2	QS-8
Pneumatic connection, port 3	Subbase
Materials note	Free of copper and PTFE
Materials information for seals	HNBR NBR
Materials information, housing	Zinc die-casting coated
Materials information, cable sheaths	PUR
Screw material data	Steel Galvanized