

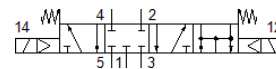
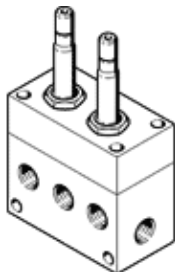
# Solenoid valve

## MC-5/4-1/2

Part number: 4861  
Product to be discontinued

FESTO

Type to be discontinued. Available until 2022. See Support Portal for alternative products.



## Data sheet

Feature	Value
Valve function	5/4 closed
Type of actuation	electrical
Operating pressure MPa	0.2 ... 1 MPa
Working pressure	2 ... 10 bar
Design structure	Poppet seat
Type of reset	mechanical spring
Sealing principle	soft
Manual override	None
Type of piloting	Piloted
Pneumatic connection, port 1	G1/2
Pneumatic connection, port 2	G1/2
Pneumatic connection, port 3	G1/2
Pneumatic connection, port 4	G1/2
Pneumatic connection, port 5	G1/2