

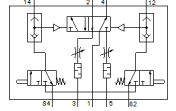
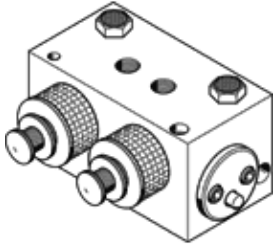
Pneumatic valve

A-5-1/4

Part number: 4436
 Product to be discontinued



With mechanical actuation and option of manual actuator attachment
 Type to be discontinued. Available until 2022. See Support Portal for alternative products.



Data sheet

Feature	Value
Valve function	5/2 bistable
Standard nominal flow rate	700 l/min
Working pressure	0 ... 10 bar
Design structure	Piston slide
Nominal size	7 mm
Pilot pressure	2 ... 10 bar
Operating medium	Compressed air in accordance with ISO8573-1:2010 [7:-:-]
Note on operating and pilot medium	Lubricated operation required
Ambient temperature	-10 ... 60 °C
Product weight	770 g
Mounting type	with through hole
Pneumatic connection, port 1	G1/4
Pneumatic connection, port 2	G1/4
Pneumatic connection, port 3	G1/4
Pneumatic connection, port 4	G1/4
Pneumatic connection, port 5	G1/4
Material housing	Aluminum