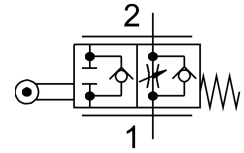


One-way flow control valve GGO-1/4-3/8

Part number: 3634

FESTO



Data sheet

| Feature | Value |
|--|--|
| Valve function | Flow control non-return function |
| Pneumatic connection 1 | G1/4 |
| Pneumatic connection 2 | G1/4 |
| Actuation type | Mechanical |
| Adjusting element | Roller lever |
| Type of mounting | With through-hole |
| Standard nominal flow rate in flow control direction | 950 l/min |
| Standard nominal flow rate in non-return direction | 1150 l/min |
| Operating pressure | 0.03 bar...8 bar 0.43 psi...116 psi |
| Ambient temperature | -10 °C...60 °C |
| Housing material | Wrought aluminum alloy |
| Mounting position | Any |
| Operating medium | Compressed air as per ISO 8573-1:2010 [7:-:-] |
| Information on operating and pilot media | Operation with oil lubrication possible (required for further use) |
| LABS (PWIS) conformity | VDMA24364-B2-L |
| Temperature of medium | -10 °C...60 °C |
| Product weight | 400 g |
| Seals material | NBR |