

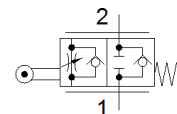
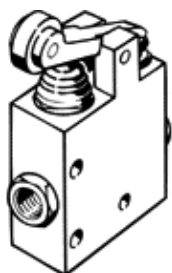
One-way flow control valve

GG-1/4-3/8

Part number: 3633

FESTO

With roller lever and adjustable basic flow rate



Data sheet

Feature	Value
Valve function	One-way flow control function
Pneumatic connection, port 1	G1/4
Pneumatic connection, port 2	G1/4
Type of actuation	mechanical
Adjusting element	Roller lever
Mounting type	with through hole
Standard nominal flow rate in flow control direction	870 l/min
Standard nominal flow rate in non-return direction	1150 l/min
Working pressure	0.03 ... 8 bar
Operating pressure	0.43 ... 116 psi
Ambient temperature	-10 ... 60 °C
Material housing	Wrought Aluminum alloy
Assembly position	Any
Operating medium	Compressed air in accordance with ISO8573-1:2010 [7:-:-]
Note on operating and pilot medium	Lubricated operation possible (subsequently required for further operation)
PWIS conformity	VDMA24364-B2-L
Medium temperature	-10 ... 60 °C
Product weight	380 g
Material seals	NBR