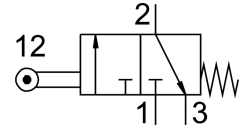
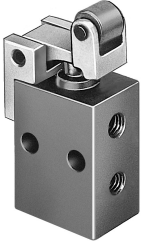


Roller lever valve R-3-M5

Part number: 3629

FESTO



Data sheet

Feature	Value
Valve function	3/2, closed, monostable
Actuation type	Mechanical
Standard nominal flow rate	80 l/min
Pneumatic working port	M5
Operating pressure	-0.95 bar...8 bar
Structural design	Plate seat
Nominal width	2 mm
Type of control	Direct
Explosion prevention and protection	Zone 1 (ATEX) Zone 2 (ATEX) Zone 21 (ATEX) Zone 22 (ATEX)
Operating medium	Compressed air as per ISO 8573-1:2010 [:-:-]
Information on operating and pilot media	Operation with oil lubrication possible (required for further use)
LABS (PWIS) conformity	VDMA24364-B1/B2-L
Ambient temperature	-10 °C...60 °C
Actuating force	16.5 N
Product weight	40 g
Type of mounting	With through-hole
Pneumatic connection 1	M5
Pneumatic connection 2	M5
Seals material	NBR
Housing material	Die-cast zinc