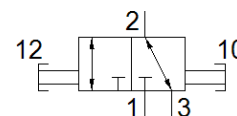
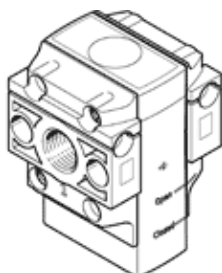


start valve HE-1/4-DB-MINI

Part number: 3563687
Product to be discontinued

FESTO

Type to be discontinued. Available until 2024. See Support Portal for alternative products.



Data sheet

Feature	Value
Series	DB
Size	Mini
Grid dimension	44 mm
Design structure	On/off valve
Type of actuation	manual
Sealing principle	soft
Exhaust-air function	not throttleable
Actuator lock	Padlock (optional)
Manual override	None
Type of piloting	direct
Valve function	3/2 bistable
Operating pressure MPa	0 ... 1 MPa
Working pressure	0 ... 10 bar
C value	6.3 l/sbar
b value	0.8
Standard nominal flow rate	2,300 l/min
Standard nominal flow rate 2-3	700 l/min
Operating medium	Compressed air in accordance with ISO8573-1:2010 [7:4:4] Inert gases
Note on operating and pilot medium	Lubricated operation not possible
Corrosion resistance classification CRC	1 - Low corrosion stress
Materials note	Conforms to RoHS
PWIS conformity	VDMA24364-B1/B2-L
Medium temperature	-5 ... 50 °C
Ambient temperature	-5 ... 50 °C
Mounting type	Line installation with through hole
Product weight	66 g
Pneumatic connection, port 1	G1/4
Pneumatic connection, port 2	G1/4
Air purity class at output	Compressed air in accordance with ISO8573-1:2010 [7:4:4] Inert gases
Material Piston slide	POM
Material seals	FPM
Material housing	PA-reinforced