

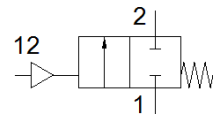
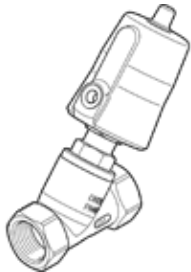
# Angle seat valve

## VZXF-L-M22C-M-A-G1-240-M1-V4B2T-50-16

Part number: 3539782

FESTO

Pneumatically actuated angle seat valve in stainless steel. Over seat version, safety position closed, G-thread, nominal width 1".



### Data sheet

Feature	Value
Design structure	Poppet valve with piston actuator
Type of actuation	pneumatic
Sealing principle	soft
Assembly position	Any
Mounting type	Line installation
Line connection	G1 threaded collar to DIN ISO 228
Nominal size	24 mm
Valve function	2/2 closed, monostable
Flow direction	non reversible
Pressure of medium	0 ... 1.6 MPa
Medium pressure	0 ... 16 bar
Nominal pressure of process valve	40
Exhaust-air function	not throttleable
Type of reset	mechanical spring
Type of piloting	With external control
Pneumatic connection	Female thread G1/8
Operating pressure MPa	0.6 ... 1 MPa
Working pressure	6 ... 10 bar
Operating pressure	87 ... 145 psi
Medium	Vapour Inert gases Filtered compressed air, degree of filtration 200 µm
Flow direction	Above valve seat, for gaseous media
Operating medium	Compressed air in accordance with ISO8573-1:2010 [7:4:4]
Max. viscosity	600 mm <sup>2</sup> /s
Medium temperature	-40 ... 200 °C
Ambient temperature	-10 ... 60 °C
Flow rate Kv	12 m <sup>3</sup> /h
Materials note	Conforms to RoHS
PWIS conformity	VDMA24364 zone III
Material process valve housing	Stainless steel casting
Material number, process valve housing	1.4408
Material spindle seal	PTFE
Material seat seal	PTFE
Product weight	1,600 g
Corrosion resistance classification CRC	2 - Moderate corrosion stress
Material drive housing	Nickel-plated brass