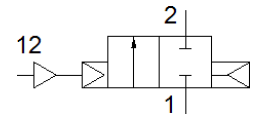
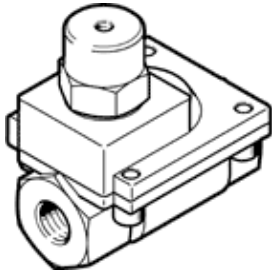


# Pneumatic valve VLX-2-1/4-MS

Part number: 34432

FESTO

2/2-way function, pneumatically actuated, brass version.



## Data sheet

| Feature                    | Value  |
|----------------------------|--|
| Design structure           | Diaphragm valve  |
| Type of actuation          | pneumatic  |
| Sealing principle          | soft   |
| Assembly position          | Any  |
| Mounting type              | Line installation  |
| Process valve connection   | G1/4   |
| Nominal size               | 13 mm  |
| Valve function             | 2/2 closed, monostable                                   |
| Flow direction             | non reversible   |
| Medium pressure            | 1 ... 10 bar   |
| Exhaust-air function       | not throttleable   |
| Type of reset              | Air spring   |
| Type of piloting           | Piloted  |
| Pilot medium               | Compressed air in accordance with ISO8573-1:2010 [7:-:-] |
| Medium                     | Filtered compressed air, degree of filtration 200 µm     |
| Medium temperature         | -10 ... 80 °C  |
| Ambient temperature        | -10 ... 60 °C  |
| Standard nominal flow rate | 2,400 l/min  |
| PWIS conformity            | VDMA24364-B1/B2-L  |
| Material housing           | Brass  |
| Material screws            | High alloy steel, non-corrosive                          |
| Material number, screw     | 1.4301   |
| Product weight             | 490 g  |