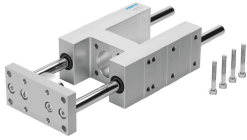


# Guide unit FEN-20- -KF

Part number: 33482

FESTO



## Data sheet

Feature	Value
Size	20
Stroke	2 mm...250 mm
Mounting position	Any
Guide	Recirculating ball bearing guide
Structural design	Guide
Explosion prevention and protection	Zone 1 (ATEX) Zone 2 (ATEX) Zone 21 (ATEX) Zone 22 (ATEX)
LABS (PWIS) conformity	VDMA24364-B2-L
Ambient temperature	-20 °C...80 °C
Max. force Fy	520 N
Max. force Fy static	830 N
Max. force Fz	520 N
Max. force Fz static	830 N
Max. torque Mx	15 Nm
Max. static moment Mx	24 Nm
Max. torque My	20 Nm
Max. static moment My	31 Nm
Max. torque Mz	20 Nm
Max. static moment Mz	31 Nm
Displacement force	15 N
Additional moving mass per 10 mm stroke	12 g
Basic weight with 0 mm stroke	828 g
Additional weight per 10 mm stroke	12 g
Center of gravity of moving mass with 0 mm stroke	42 mm
Center of gravity of moving mass with 10 mm stroke	4.7 mm
Type of mounting	With internal thread
Note on materials	RoHS-compliant
Material of guide component	Tempered steel
Housing material	Wrought aluminum alloy, anodized
Material of yoke plate	Wrought aluminum alloy, anodized