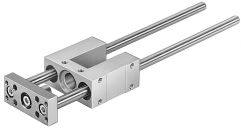


# Guide unit FEN-12/16- -KF

Part number: 33481

FESTO



## Data sheet

Feature	Value
Size	12/16
Stroke	1 mm...200 mm
Mounting position	Any
Guide	Recirculating ball bearing guide
Structural design	Guide
Explosion prevention and protection	Zone 1 (ATEX) Zone 2 (ATEX) Zone 21 (ATEX) Zone 22 (ATEX)
LABS (PWIS) conformity	VDMA24364-B2-L
Ambient temperature	-20 °C...80 °C
Max. force Fy	520 N
Max. force Fy static	830 N
Max. force Fz	520 N
Max. force Fz static	830 N
Max. torque Mx	12 Nm
Max. static moment Mx	20 Nm
Max. torque My	7 Nm
Max. static moment My	12 Nm
Max. torque Mz	7 Nm
Max. static moment Mz	12 Nm
Displacement force	15 N
Additional moving mass per 10 mm stroke	12 g
Basic weight with 0 mm stroke	429 g
Additional weight per 10 mm stroke	12 g
Center of gravity of moving mass with 0 mm stroke	40 mm
Center of gravity of moving mass with 10 mm stroke	4.9 mm
Type of mounting	With internal thread
Note on materials	RoHS-compliant
Material of guide component	Tempered steel
Housing material	Wrought aluminum alloy, anodized
Material of yoke plate	Wrought aluminum alloy, anodized