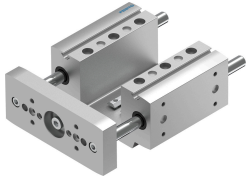


Guide unit EAGF-P1-KF-40-

Part number: 3192966

FESTO



Data sheet

Feature	Value
Size	40
Stroke	1 mm...400 mm
Reversing backlash	0 µm
Mounting position	Any
Guide	Recirculating ball bearing guide
Structural design	Guide
Max. acceleration	25 m/s ²
Max. speed	1 m/s
Corrosion resistance class (CRC)	0 - No corrosion stress
LABS (PWIS) conformity	VDMA24364-B2-L
Degree of protection	IP40
Ambient temperature	0 °C...50 °C
Max. force F _y	380 N
Max. force F _y static	510 N
Max. force F _z	380 N
Max. force F _z static	510 N
Max. torque M _x	20 Nm
Max. static moment M _x	27 Nm
Max. torque M _y	15 Nm
Max. static moment M _y	20 Nm
Max. torque M _z	15 Nm
Max. static moment M _z	20 Nm
Displacement force	6 N
Moving mass at 0 mm stroke	560 g
Basic weight with 0 mm stroke	1910 g
Additional weight per 10 mm stroke	18 g
Additional moving mass per 10 mm stroke	18 g
Center of gravity of moving mass with 0 mm stroke	36 mm
Center of gravity of moving mass with 10 mm stroke	4.5 mm
Type of mounting	With internal thread
Note on materials	RoHS-compliant

Feature	Value
Material of guide component	Tempered steel Hard-chrome-plated
Housing material	Wrought aluminum alloy Anodized
Material of yoke plate	Wrought aluminum alloy Anodized