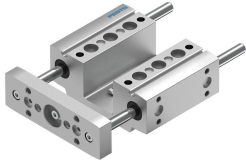


# Guide unit EAGF-P1-KF-16-50

Part number: 3192932

FESTO



## Data sheet

Feature	Value
Size	16
Stroke	50 mm
Reversing backlash	0 $\mu$ m
Mounting position	Any
Guide	Recirculating ball bearing guide
Structural design	Guide
Max. acceleration	25 m/s <sup>2</sup>
Max. speed	1 m/s
Corrosion resistance class (CRC)	0 - No corrosion stress
LABS (PWIS) conformity	VDMA24364-B2-L
Degree of protection	IP40
Ambient temperature	0 °C...50 °C
Max. force F <sub>y</sub>	160 N
Max. force F <sub>y</sub> static	355 N
Max. force F <sub>z</sub>	160 N
Max. force F <sub>z</sub> static	355 N
Max. torque M <sub>x</sub>	6 Nm
Max. static moment M <sub>x</sub>	13 Nm
Max. torque M <sub>y</sub>	4 Nm
Max. static moment M <sub>y</sub>	9 Nm
Max. torque M <sub>z</sub>	4 Nm
Max. static moment M <sub>z</sub>	9 Nm
Displacement force	3.2 N
Moving mass at 0 mm stroke	160 g
Basic weight with 0 mm stroke	600 g
Additional weight per 10 mm stroke	8 g
Additional moving mass per 10 mm stroke	8 g
Center of gravity of moving mass with 0 mm stroke	29 mm
Center of gravity of moving mass with 10 mm stroke	4.5 mm
Type of mounting	With internal thread
Note on materials	RoHS-compliant

<b>Feature</b>	<b>Value</b>
Material of guide component	Tempered steel Hard-chrome-plated
Housing material	Wrought aluminum alloy Anodized
Material of yoke plate	Wrought aluminum alloy Anodized