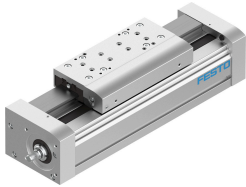


Ball screw linear actuator EGC-120-100-BS-25P-KF-0H-ML-GK

FESTO

Part number: 3013578



Data sheet

Feature	Value
Working stroke	100 mm
Size	120
Stroke reserve	0 mm
Screw diameter	25 mm
Spindle pitch	25 mm/U
Mounting position	Any
Guide	Recirculating ball bearing guide
Structural design	Electromechanical linear axis with ball screw
Motor type	Stepper motor Servo motor
Spindle type	Ball screw
Max. acceleration	15 m/s ²
Max. speed	1.5 m/s...1.875 m/s
Repetition accuracy	±0.02 mm
Duty cycle	100%
LABS (PWIS) conformity	VDMA24364-B2-L
Degree of protection	IP40
Ambient temperature	-10 °C...60 °C
2nd moment of area Ix	5010000 mm ⁴
2nd moment of area Iy	5820000 mm ⁴
2nd moment of area Iz	5010000 mm ⁴
Max. force Fy	6890 N
Max. force Fz	6890 N
Max. torque Mx	144 Nm
Max. radial force on actuator shaft	500 N
Max. feed force Fx	1500 N
Torsion moment of inertia It	1430000 mm ⁴
Mass moment of inertia JH per meter of stroke	2.756 kgcm ²
Feed constant	25 mm/U
Material of end caps	Wrought aluminum alloy Anodized

Feature	Value
Moment compensator material	Wrought aluminum alloy Anodized
Profile material	Wrought aluminum alloy Anodized
Note on materials	RoHS-compliant
Drive cover material	Wrought aluminum alloy Anodized
Slide carriage material	Steel
Guide rail material	Steel
Slide material	Wrought aluminum alloy Anodized
Spindle nut material	Steel
Spindle material	Steel