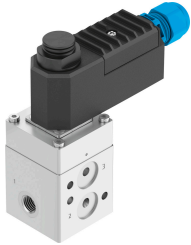


Pneumatic valve VOFC-LT-M32C-

Part number: 2868687

FESTO



Data sheet

Feature	Value
Valve function	3/2, closed, monostable
Actuation type	Electrical
Width	51 mm
Standard nominal flow rate	595 l/min...2794 l/min
Pneumatic working port	Sub-base G1/4 G1/2 1/4 NPT 1/2 NPT
Operating pressure	0.1 MPa...0.8 MPa 1 bar...8 bar
Structural design	Pilot-controlled piston poppet valve
Reset method	Mechanical spring
Degree of protection	IP50 IP65
CE marking (see declaration of conformity)	as per EU explosion protection directive (ATEX)
Explosion protection certification outside the EU	EPL Db (IEC-EX) EPL Db (KR) EPL Gb (IEC-EX) EPL Gb (KR)
Certificate issuing authority	BVS14ATEXE098X IECEX BVS14.0063X KGS15-GA4BO-0565X German Technical Control Board (TÜV) 968/V 1251.00/21
ATEX category gas	II 2G
ATEX category for dust	II 2D
Type of ignition protection for gas	Ex ia IIC T6, T5 Gb
Type of (ignition) protection for dust	Ex ia IIIC T85°C, T125°C Db
Explosive ambient temperature	T5, T125°C: -40°C ≤ Ta ≤ +70°C T6, T85°C: -40°C ≤ Ta ≤ +30°C
Nominal width	6 mm...12 mm
Sealing principle	Hard
Mounting position	Any
Manual override	None
Type of control	Pilot-controlled

Feature	Value
Pilot air supply port	External Internal
Flow direction	Non-reversible
Safety function	Safe venting
Safety integrity level (SIL)	Up to SIL 3 high demand mode Up to SIL 3 low demand mode
Information on operating pressure	0 – 0.8 bar with external pilot air
Flow rate for piston valve pressurization	0.54 m ³ /h...2.56 m ³ /h
Flow rate for piston valve exhausting	0.54 m ³ /h...2.56 m ³ /h
Standard nominal flow rate 2-3	1066 l/min...4224 l/min
Switching time off	14 ms...18 ms
On switching time	24 ms...25 ms
Explosion prevention and protection	Zone 1 (ATEX) Zone 1 (IEC-EX) Zone 1 (KR) Zone 2 (ATEX) Zone 21 (ATEX) Zone 21 (IEC-EX) Zone 21 (KR) Zone 22 (ATEX)
Operating medium	Compressed air as per ISO 8573-1:2010 [7:2:2]
Corrosion resistance class (CRC)	4 - Particularly high corrosion stress
LABS (PWIS) conformity	VDMA24364 zone III
Temperature of medium	-25 °C...60 °C
Ambient temperature	-25 °C...60 °C
Product weight	550 g...985 g
Pneumatic connection 1	M5 G1/4 G1/2 1/4 NPT 1/2 NPT NAMUR connection diagram
Pneumatic connection 2	Flange 1/4 Flange 1/2 G1/4 G1/2 1/4 NPT 1/2 NPT NAMUR connection diagram
Pneumatic connection 3	G1/4 G1/2 1/4 NPT 1/2 NPT
Note on materials	RoHS-compliant
Seals material	EPDM NBR VMQ
Housing material	Aluminum, ematal coated PBT-reinforced High-alloy stainless steel