

# Hand slide valve

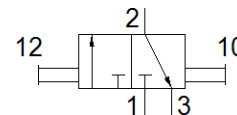
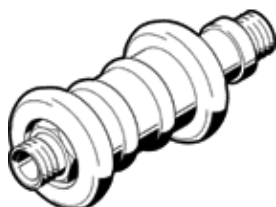
## W-3-1/2

Part number: 2342  
Product to be discontinued

FESTO

Normally closed.

Type to be discontinued. Available until 2018. See Support Portal for alternative products.



## Data sheet

Feature	Value
Valve function	3/2 bistable
Pneumatic connection, port 1	G1/2
Pneumatic connection, port 2	G1/2
Type of actuation	manual
Mounting type	Line installation Threaded
Standard nominal flow rate	2,000 l/min
Nominal size	12 mm
Working pressure	-0.95 ... 10 bar
Ambient temperature	-10 ... 60 °C
Materials information, housing	Brass
Operating medium	Compressed air in accordance with ISO8573-1:2010 [7:4:4]
Sealing principle	soft
Assembly position	Any
Design structure	Sleeve slide
Type of piloting	direct
Flow direction	reversible
Note on operating and pilot medium	Lubricated operation possible (subsequently required for further operation)
Medium temperature	-10 ... 60 °C
Actuating force	20 N
Product weight	300 g
Materials information for screw-in stud	Wrought Aluminum alloy Anodized
Materials note	Conforms to RoHS
Materials information for seals	NBR