

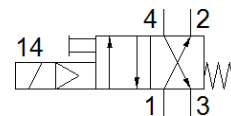
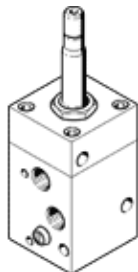
# Solenoid valve

## MCH-4-1/4

Part number: 2201  
 Product to be discontinued

FESTO

Type to be discontinued. Available until 2022. See Support Portal for alternative products.



## Data sheet

Feature	Value
Valve function	4/2 monostable
Type of actuation	electrical
Working pressure	2 ... 10 bar
Design structure	Poppet seat
Type of reset	mechanical spring
Protection class	IP65
Sealing principle	soft
Type of piloting	Piloted
Switching time off	23 ms
Switching time on	16 ms
Medium temperature	-10 ... 60 °C
Ambient temperature	-5 ... 40 °C
Pneumatic connection, port 1	G1/4
Pneumatic connection, port 2	G1/4
Pneumatic connection, port 3	G1/4
Pneumatic connection, port 4	G1/4
Materials note	Conforms to RoHS
Material housing	Aluminum casting