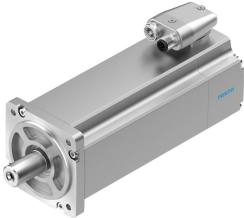


Servo motor EMME-AS-80-S-LS-AMB

Part number: 2093107

FESTO



Data sheet

Feature	Value
Ambient temperature	-10 °C...40 °C
Storage temperature	-20 °C...70 °C
Relative air humidity	0 - 90 %
Conforms to standard	IEC 60034
Insulation protection class	F
Rating class according to EN 60034-1	S1
Degree of protection	IP21
Electrical connection technology	Plug
Note on materials	RoHS-compliant
Corrosion resistance class (CRC)	0 - No corrosion stress
LABS (PWIS) conformity	VDMA24364 zone III
Certification	RCM compliance mark c UL us - Recognized (OL)
CE marking (see declaration of conformity)	As per EU EMC directive As per EU low voltage directive As per EU RoHS directive
UKCA marking (see declaration of conformity)	To UK instructions for EMC To UK RoHS instructions To UK instructions for electrical equipment
Nominal operating voltage DC	360 V
DC nominal voltage	360 V
Type of winding switch	Star inside
Number of pole pairs	3
Stall torque	2.8 Nm
Nominal torque	2.4 Nm
Peak torque	11.2 Nm
Nominal rotary speed	3000 1/min
Max. rotational speed	4690 1/min
Motor nominal power	750 W
Continuous stall current	3.1 A
Motor nominal current	2.6 A
Peak current	12.4 A
Motor constants	0.923 Nm/A

Feature	Value
Voltage constant, phase-to-phase	54.3 mVmin
Phase-phase winding resistance	4.6 Ohm
Winding inductance phase-phase	9.46 mH
Total output inertia moment	1.68 kgcm ²
Product weight	3700 g
Permissible axial shaft load	70 N
Permissible radial shaft load	350 N
Rotor position sensor	Absolute encoder, multi-turn
Rotor position sensor interface	HIPERFACE®
Rotor position sensor measuring principle	Capacitive
Rotor position encoder, sinusoidal/cosinusoidal periods per revolution	16
Typical rotor position sensor resolution	12 bit
Rotor position encoder, typical angular accuracy	20 arcmin
Brake holding torque	4.5 Nm
Brake DC operating voltage	24 V
Brake power consumption	12 W
Brake mass moment of inertia	0.222 kgcm ²
Switching cycles, holding brake	5 million idle actuations (without friction work!)
MTTF, subcomponent	797 years, holding brake
MTTFd, subcomponent	271 years, rotor position sensor
Energy efficiency	ENEFF (CN) / Class 2