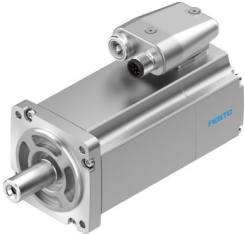


Servo motor EMME-AS-60-S-LS-AS

Part number: 2089698

FESTO



Data sheet

Feature	Value
Ambient temperature	-10 °C...40 °C
Storage temperature	-20 °C...70 °C
Relative air humidity	0 - 90 %
Conforms to standard	IEC 60034
Insulation protection class	F
Rating class according to EN 60034-1	S1
Degree of protection	IP21
Electrical connection technology	Plug
Note on materials	RoHS-compliant
Corrosion resistance class (CRC)	0 - No corrosion stress
LABS (PWIS) conformity	VDMA24364 zone III
Certification	RCM compliance mark c UL us - Recognized (OL)
CE marking (see declaration of conformity)	As per EU EMC directive As per EU low voltage directive As per EU RoHS directive
UKCA marking (see declaration of conformity)	To UK instructions for EMC To UK RoHS instructions To UK instructions for electrical equipment
Nominal operating voltage DC	360 V
DC nominal voltage	360 V
Type of winding switch	Star inside
Number of pole pairs	3
Stall torque	0.7 Nm
Nominal torque	0.6 Nm
Peak torque	2.8 Nm
Nominal rotary speed	3000 rpm
Max. rotational speed	5131 rpm
Motor nominal power	190 W
Continuous stall current	0.9 A
Motor nominal current	0.8 A
Peak current	3.6 A
Motor constants	0.75 Nm/A

Feature	Value
Voltage constant, phase-to-phase	49.6 mVmin
Phase-phase winding resistance	26.4 Ohm
Winding inductance phase-phase	31.9 mH
Total output inertia moment	0.22 kgcm ²
Product weight	1300 g
Permissible axial shaft load	50 N
Permissible radial shaft load	250 N
Rotor position sensor	Absolute encoder, single-turn
Rotor position sensor interface	HIPERFACE®
Rotor position sensor measuring principle	Capacitive
Rotor position encoder, sinusoidal/cosinusoidal periods per revolution	16
Typical rotor position sensor resolution	12 bit
Rotor position encoder, typical angular accuracy	20 arcmin
MTTFd, subcomponent	340 years, rotor position sensor