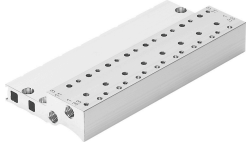


Connection block MHP2-PR10-3

Part number: 197446

FESTO



Data sheet

Feature	Value
Max. no. of valve positions	10
Corrosion resistance class (CRC)	2 - Moderate corrosion stress
LABS (PWIS) conformity	VDMA24364-B1/B2-L
Sub-base mounting type	With through-hole With H-rail
Pneumatic valve mounting type	With internal thread
Pneumatic connection 1/33	M7
Pneumatic connection 3/11	M7
Material of sub-base	Wrought aluminum alloy