

Solenoid valve

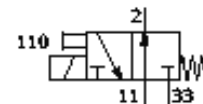
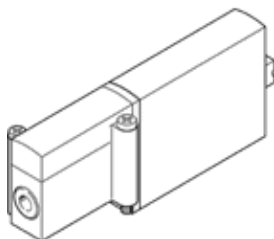
MHA2-M1H-3/2O-2-HC

Part number: 197404

FESTO

manifold block valve for individual and battery mounting, fast switching, with plug connection at rear.

Discontinued, available through 2007



Data sheet

| Feature | Value |
|---|--|
| Valve function | 3/2 offen monostabil |
| Type of actuation | electrical |
| Width | 10 mm |
| Standard nominal flow rate | 100 l/min |
| Pneumatic working line | Subbase |
| Operating voltage | 24V DC |
| Operating pressure | -0.9 ... 8 bar |
| Design structure | Pressure-relieved poppet valve |
| Type of reset | mechanical spring |
| Protection class | IP40 |
| Authorisation | c UL us - Recognized (OL) |
| Nominal size | 2 mm |
| Grid dimension | 14 mm |
| Exhaust-air function | throttleable |
| Sealing principle | soft |
| Assembly position | Any |
| Manual override | Pushing |
| Type of piloting | direct |
| Flow direction | reversible with restrictions |
| Maximum switching frequency | 130 Hz |
| Switching time off | 7 ms |
| Switching time on | 7 ms |
| Duty cycle | 100% |
| Characteristic coil data | 24V DC: 2,88W |
| Permissible voltage fluctuation | +/- 10 % |
| Operating medium | Filtered, unlubricated compressed air, 40 µm filtration Filtered, lubricated compressed air, 40 µm filtration |
| Corrosion resistance classification CRC | 2 |
| Medium temperature | -5 ... 40 °C |
| Ambient temperature | -5 ... 40 °C |
| Product weight | 50 g |
| Mounting type | On subbase |
| Pneumatic connection, 11 | Subbase |
| Pneumatic connection, port 2 | Subbase |
| Pneumatic connection, 33 | Subbase |
| Materials note | Free of copper and PTFE |
| Materials information for seals | HNBR NBR |
| Materials information, housing | Zinc die-casting coated |
| Screw material data | Steel Galvanized |