

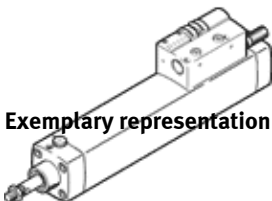
# Cylinder-valve combination

## DNCV-50- -PPV-A-5/3B

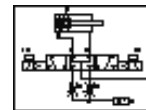
Part number: 196806

FESTO

Without diagnosis module  
Run-out type. Available until 2010.



Exemplary representation



## Data sheet

| Feature                                    | Value   |
|--|---|
| Stroke                                     | 85 ... 500 mm   |
| Piston diameter                            | 50 mm   |
| Based on the standard                      | ISO 15552 (previously also VDMA 24652, ISO 6431, NF E49 003.1, UNI 10290)                           |
| Cushioning                                 | PPV: Pneumatic cushioning adjustable at both ends   |
| Assembly position                          | Any   |
| Manual override                            | detenting<br>Pushing  |
| Position detection                         | For proximity sensor  |
| Switching element function                 | Normally open contact   |
| Working pressure                           | 3 ... 8 bar   |
| Operating voltage range DC                 | 24 V  |
| Mode of operation                          | double-acting   |
| Max. output current, diagnosis             | 300 mA  |
| Max. output current, sensors               | 20 mA   |
| Max. switching output voltage DC           | 26.9 V  |
| Characteristic coil data                   | 24 V DC: low current phase: 0.5 W, high current phase: 1.23 W                                       |
| Operating medium                           | Filtered compressed air, 5 µm filtration<br>Filtered, unlubricated compressed air, 40 µm filtration |
| CE symbol (see declaration of conformity)  | according to EU-EMV guideline   |
| Corrosion resistance classification CRC    | 2   |
| Protection class                           | IP65<br>to IEC 60529  |
| Ambient temperature                        | -5 ... 50 °C  |
| Authorization                              | C-Tick  |
| Cushioning length                          | 22 mm   |
| Theoretical force at 6 bar, return stroke  | 990 N   |
| Theoretical force at 6 bar, advance stroke | 1,178 N   |
| Moving mass with 0 mm stroke               | 538 g   |
| Additional weight per 10 mm stroke         | 79 g  |
| Basic weight for 0 mm stroke               | 1,960 g   |
| Additional mass factor per 10 mm of stroke | 25 g  |
| Electrical connection                      | 8-pin<br>M12x1<br>Plug<br>Round design  |
| Pneumatic connection, port 1               | QS-10   |
| Pneumatic connection, port 3               | Integrated silencer   |
| Pneumatic connection, port 5               | Integrated silencer   |