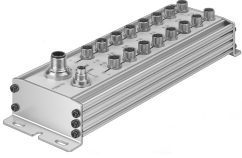


# Input module CP-E16-M8-Z

Part number: 189670

FESTO



## Data sheet

Feature	Value
LABS (PWIS) conformity	VDMA24364-B2-L
CE marking (see declaration of conformity)	As per EU EMC directive as per EU explosion protection directive (ATEX) As per EU RoHS directive
UKCA marking (see declaration of conformity)	To UK instructions for EMC acc. to UK EX instructions To UK RoHS instructions
KC characters	KC EMC
Certification	RCM compliance mark c UL us - Recognized (OL)
Explosion prevention and protection	Zone 2 (ATEX) Zone 2 (UKEX) Zone 22 (ATEX) Zone 22 (UKEX)
ATEX category gas	II 3G
ATEX category for dust	II 3D
Explosion protection certification outside the EU	EPL Dc (GB) EPL Gc (GB)
Type of ignition protection for gas	Ex ec IIC T5 Gc X
Type of (ignition) protection for dust	Ex tc IIIC T80°C IP65 Dc X
Explosive ambient temperature	-5°C ≤ Ta ≤ +50°C