

Solenoid valve

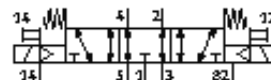
MN2H-5/3E-D-01-S-12DCA

Part number: 187887

FESTO

In accordance with ISO 15407/-1, with solenoid coil and manual override, without plug socket.

Type to be discontinued. Available until 2009.



Data sheet

| Feature | Value |
|---|---|
| Valve function | 5/3 exhausted |
| Type of actuation | electrical |
| Width | 26 mm |
| Standard nominal flow rate | 1,000 l/min |
| Working pressure | -0.9 ... 16 bar |
| Design structure | Piston slide |
| Type of reset | mechanical spring |
| Protection class | IP65 |
| Nominal size | 8 mm |
| Grid dimension | 27 mm |
| Exhaust-air function | throttleable |
| Sealing principle | soft |
| Assembly position | Any |
| Conforms to standard | ISO 15407-1 VDMA 24563 |
| Manual override | with accessories, detenting |
| Type of piloting | Piloted |
| Pilot air supply | external |
| Flow direction | reversible |
| Pilot pressure | 3 ... 10 bar |
| Switching time off | 52 ms |
| Switching time on | 23 ms |
| Characteristic coil data | 12V DC: 1,4W 24 V AC: 50 Hz, switching power: 3 VA, holding capacity: 2.4 VA 24V AC: 60Hz |
| Operating medium | filtered compressed air, grade of filtration 40 µm, lubricated or unlubricated Vacuum |
| Corrosion resistance classification CRC | 2 |
| Medium temperature | -10 ... 50 °C |
| Pilot medium | filtered compressed air, grade of filtration 40 µm, lubricated or unlubricated |
| Ambient temperature | -10 ... 50 °C |
| Product weight | 340 g |
| Electrical connection | Plug to DIN 43650 Design C |
| Mounting type | with through hole |
| Auxiliary pilot air port 12/14 | Subbase VDMA 24563 size 1 |
| Pilot exhaust port 82/84 | Connection plate size 26 mm, according to ISO 15407-1 Subbase VDMA 24563 size 1 |
| Pneumatic connection, port 1 | Connection plate size 26 mm, according to ISO 15407-1 |

| Feature | Value |
|---------------------------------|--|
| | Subbase VDMA 24563 size 1 |
| Pneumatic connection, port 2 | Connection plate size 26 mm, according to ISO 15407-1 Subbase VDMA 24563 size 1 |
| Pneumatic connection, port 3 | Connection plate size 26 mm, according to ISO 15407-1 Subbase VDMA 24563 size 1 |
| Pneumatic connection, port 4 | Connection plate size 26 mm, according to ISO 15407-1 Subbase VDMA 24563 size 1 |
| Pneumatic connection, port 5 | Connection plate size 26 mm, according to ISO 15407-1 Subbase VDMA 24563 size 1 |
| Materials information for seals | NBR |
| Materials information, housing | Aluminum die cast |