

Service unit FRC-1/4-D-MIDI-KF-A

Part number: 185844

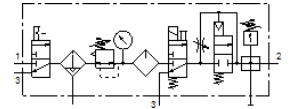
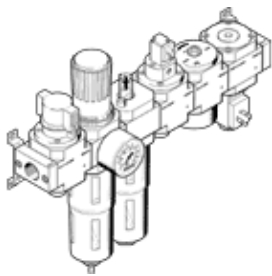
Classic - do not use for new projects

consisting of manual on/off valve, filter regulator, lubricator, on/off valve with solenoid coil 24 V DC without socket, pressure build-up valve and distributor module with pressure switch but without socket, with mounting brackets.

With automatic condensate drain and metal bowl guard.

Modern alternatives can be found by entering the first four characters of the type code in the search field.

FESTO



Data sheet

Feature	Value
Size	Midi
Series	D
Actuator lock	Rotary knob with lock
Assembly position	Vertical +/- 5°
Grade of filtration	40 µm
Condensate drain	fully automatic
Design structure	Branching module Pressure sensor On/off valve Filter regulator with pressure gauge proportional standard mist lubricator Safety start-up valve
Max. condensate volume	43 cm ³
Bowl guard	Metal bowl guard
Pressure gauge	with pressure gauge
Working pressure	3 ... 12 bar
Pressure regulation range	2.5 ... 12 bar
Max. pressure hysteresis	0.25 bar
Standard nominal flow rate	1,060 l/min
Operating medium	Compressed air in accordance with ISO8573-1:2010 [-:-:-] Inert gases
Corrosion resistance classification CRC	2 - Moderate corrosion stress
PWIS conformity	VDMA24364-B1/B2-L
Air purity class at output	Compressed air in accordance with ISO8573-1:2010 [7:4:-] Inert gases
Medium temperature	-10 ... 60 °C
Ambient temperature	-10 ... 60 °C
Product weight	4,000 g
Mounting type	Line installation with accessories Optional
Pneumatic connection, port 1	G1/4
Pneumatic connection, port 2	G1/4
Material housing	Zinc die-casting
Material bowl	PC