

# One-way flow control valve CPV10-BS-2XGRZZ-M7

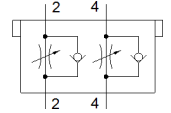
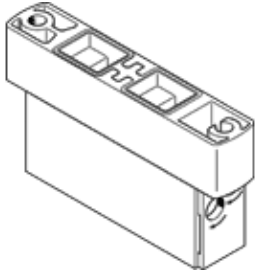
Part number: 184140

Classic - do not use for new projects

[For labeling CP valves and CP valve manifolds](#)

Modern alternatives can be found by entering the first four characters of the type code in the search field.

FESTO



## Data sheet

Feature	Value
PWIS conformity	VDMA24364-B1/B2-L
Product weight	30 g
Materials note	Conforms to RoHS