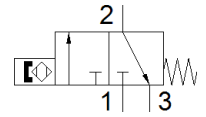
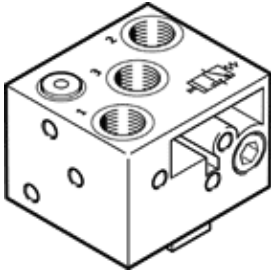


Proximity Sensor SMPO-8E

Part number: 178563

FESTO

Pneumatic, for drives with T-slot, without mounting kit.
Separate mounting component SMB-8E required (part no. 178230)



Data sheet

Feature	Value
Design	for T-slot
Materials note	Conforms to RoHS
Measuring principle	Magnetic
Working pressure	2 ... 8 bar
Operating medium	Compressed air in accordance with ISO8573-1:2010 [6:4:4]
Note on operating and pilot medium	Lubricated operation not possible
Ambient temperature	-15 ... 60 °C
Reproducibility of switching value	+/- 0,2 mm
Switch-on time	22 ms
Switch-off time	52 ms
Mounting type	with through hole with accessories Insertable in slot from above
Valve function	3/2
Pneumatic connection	M5
Product weight	11 g
Material housing	Aluminum PA Anodized High alloy steel, non-corrosive
Operating status display	Optical
Protection class	IP65
PWIS conformity	VDMA24364-B2-L