

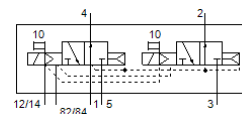
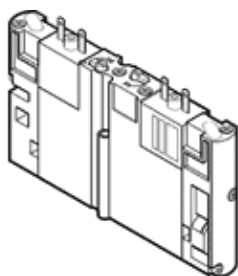
Solenoid valve

CPA10-M1H-2X3-OLS

Part number: 173451
Product to be discontinued

FESTO

Type to be discontinued. Available until 2017. See Support Portal for alternative products.



Data sheet

Feature	Value
Valve function	2x3/2 open, monostable
Type of actuation	electrical
Width	10 mm
Standard nominal flow rate	220 l/min
Working pressure	3 ... 10 bar
Design structure	Piston slide
Type of reset	Air spring
Nominal size	3.6 mm
Exhaust-air function	not throttleable
Sealing principle	soft
Assembly position	Any
Manual override	with accessories, detenting
Type of piloting	Piloted
Flow direction	non reversible
Pilot pressure	3 ... 8 bar
b value	0.27
C value	1.03 l/sbar
Switching time off	18 ms
Switching time on	8 ms
Operating medium	Compressed air in accordance with ISO8573-1:2010 [7:4:4]
Note on operating and pilot medium	Lubricated operation possible (subsequently required for further operation)
Corrosion resistance classification CRC	2
Medium temperature	-5 ... 50 °C
Ambient temperature	-5 ... 50 °C
Mounting type	with through hole
Pneumatic connection, port 1	Subbase
Pneumatic connection, port 2	Subbase
Pneumatic connection, port 3	Subbase
Materials information for seals	NBR
Materials information, housing	Aluminum die cast