

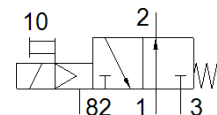
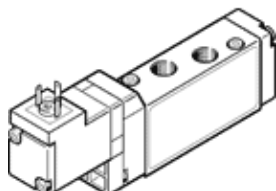
# Solenoid valve

## MOEBH-3/2-1/8-P-B

Part number: 173003  
Product to be discontinued

FESTO

With solenoid coil and manual override, without socket.  
Type to be discontinued. Available until 2023. See Support Portal for alternative products.



## Data sheet

Feature	Value
Valve function	3/2 open, monostable
Type of actuation	electrical
Width	17.8 mm
Standard nominal flow rate	500 l/min
Working pressure	2 ... 8 bar
Design structure	Piston slide
Type of reset	mechanical spring
Authorization	c UL us - Recognized (OL)
Protection class	IP65
Nominal size	5 mm
Grid dimension	18 mm
Exhaust-air function	throttleable
Sealing principle	soft
Assembly position	Any
Manual override	with accessories, detenting
Type of piloting	Piloted
Pilot air supply	Internal
Flow direction	non reversible
Lap	Positive overlap
b value	0.3
C value	2.2 l/sbar
Switching time off	28 ms
Switching time on	10 ms
Duty cycle	100 %
Characteristic coil data	24 V DC: 2.5 W
Operating medium	Compressed air in accordance with ISO8573-1:2010 [7:4:4]
Note on operating and pilot medium	Lubricated operation possible (subsequently required for further operation)
Vibration resistance	Transport application test at severity level 1 in accordance with FN 942017-4 and EN 60068-2-6
Shock resistance	Shock test with severity level 2 in accordance with FN 942017-5 and EN 60068-2-27
Corrosion resistance classification CRC	2 - Moderate corrosion stress
Storage temperature	-20 ... 40 °C
Medium temperature	-5 ... 50 °C
Sound pressure level	75 dB(A)
Pilot medium	Compressed air in accordance with ISO8573-1:2010 [7:4:4]
Ambient temperature	-5 ... 50 °C
Product weight	105 g
Electrical connection	Plug pattern type C to EN 175301-803 Plug to EN 175301-803

Feature	Value
	Cubic design
Mounting type	on manifold rail
Pilot exhaust port 82/84	Subbase
Pneumatic connection, port 1	Subbase
Pneumatic connection, port 2	G1/8
Pneumatic connection, port 3	Subbase
Materials note	Conforms to RoHS
Material seals	HNBR NBR
Material housing	Aluminum die cast