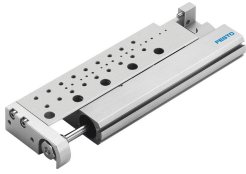


# Mini slide SLF-16-80-P-A

Part number: 170516

FESTO



## Data sheet

| Feature                                  | Value  |
|--|--|
| Stroke                                   | 80 mm  |
| Adjustable end position range/length     | 5 mm   |
| Piston diameter                          | 16 mm  |
| Drive unit operating mode                | Yoke   |
| Cushioning                               | Elastic cushioning rings/pads at both ends                         |
| Mounting position                        | Any  |
| Guide                                    | Ball bearing cage guide  |
| Structural design                        | Yoke<br>Piston<br>Piston rod<br>Ball roller guide<br>Slide         |
| Position sensing                         | For proximity sensor   |
| Operating pressure                       | 0.1 MPa...1 MPa<br>1 bar...10 bar<br>14.5 psi...145 psi            |
| Mode of operation                        | Double-acting  |
| Operating medium                         | Compressed air as per ISO 8573-1:2010 [7:4:4]                      |
| Information on operating and pilot media | Operation with oil lubrication possible (required for further use) |
| Corrosion resistance class (CRC)         | 0 - No corrosion stress  |
| LABS (PWIS) conformity                   | VDMA24364-B2-L   |
| Ambient temperature                      | -20 °C...60 °C   |
| Impact energy in the end positions       | 0,1 Nm   |
| Max. force Fy                            | 410 N  |
| Max. force Fz                            | 410 N  |
| Max. torque Mx                           | 4.3 Nm   |
| Max. torque My                           | 4.3 Nm   |
| Max. torque Mz                           | 1.5 Nm   |
| Theoretical force at 6 bar, retracting   | 104 N  |
| Theoretical force at 6 bar, advancing    | 121 N  |
| Moving mass                              | 199 g  |
| Product weight                           | 539 g  |
| Basic weight with 0 mm stroke            | 539 g  |

| <b>Feature</b>          | <b>Value</b>               |
|-------------------------|----------------------------|
| Alternative connections | See product drawing        |
| Type of mounting        | With through-hole          |
| Pneumatic connection    | M5                         |
| Note on materials       | RoHS-compliant             |
| Cover material          | Wrought aluminum alloy     |
| Seals material          | HNBR                       |
| Housing material        | Wrought aluminum alloy     |
| Piston rod material     | High-alloy stainless steel |