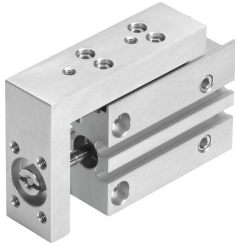


# Mini slide SLS- 6-25-P-A

Part number: 170489

FESTO



## Data sheet

| Feature                                  | Value  |
|--|--|
| Stroke                                   | 25 mm  |
| Piston diameter                          | 6 mm   |
| Drive unit operating mode                | Yoke   |
| Cushioning                               | Elastic cushioning rings/pads at both ends                         |
| Mounting position                        | Any  |
| Guide                                    | Ball bearing cage guide  |
| Structural design                        | Yoke<br>Piston<br>Piston rod<br>Ball roller guide<br>Slide         |
| Position sensing                         | For proximity sensor   |
| Operating pressure                       | 0.15 MPa...1 MPa<br>1.5 bar...10 bar<br>21.75 psi...145 psi        |
| Mode of operation                        | Double-acting  |
| Operating medium                         | Compressed air as per ISO 8573-1:2010 [7:4:4]                      |
| Information on operating and pilot media | Operation with oil lubrication possible (required for further use) |
| Corrosion resistance class (CRC)         | 0 - No corrosion stress  |
| LABS (PWIS) conformity                   | VDMA24364-B2-L   |
| Ambient temperature                      | -20 °C...60 °C   |
| Impact energy in the end positions       | 0,008 Nm   |
| Max. force Fy                            | 150 N  |
| Max. force Fz                            | 150 N  |
| Max. torque Mx                           | 0.9 Nm   |
| Max. torque My                           | 0.9 Nm   |
| Max. torque Mz                           | 0.6 Nm   |
| Theoretical force at 6 bar, retracting   | 13 N   |
| Theoretical force at 6 bar, advancing    | 17 N   |
| Moving mass                              | 37 g   |
| Product weight                           | 131 g  |
| Alternative connections                  | See product drawing  |
| Type of mounting                         | With through-hole  |

| <b>Feature</b>       | <b>Value</b>                     |
|----------------------|----------------------------------|
| Pneumatic connection | M5                               |
| Note on materials    | RoHS-compliant                   |
| Cover material       | Wrought aluminum alloy, anodized |
| Guide material       | Steel                            |
| Housing material     | High-alloy stainless steel       |