

One-way flow control valve GRLA-1/8-NPT-QS-5/32-U

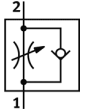
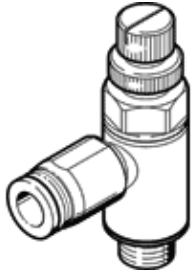
Part number: 165009

FESTO

For exhaust air flow control, with swivel joint.

This product is only available if ordered from the Festo Corporation, USA.

Type to be discontinued. Available until 2011.



Data sheet

Feature	Value
Valve function	One-way flow control function
Pneumatic connection, port 1	QS-5/32
Pneumatic connection, port 2	NPT1/8-27
Adjusting element	Knurled screw
Standard nominal flow rate in flow control direction	112 l/min
Standard nominal flow rate in non-return direction	58 l/min
Working pressure	1 ... 9 bar
Ambient temperature	0 ... 60 °C
Materials information, housing	PBT-reinforced
Operating medium	Compressed air, filtered, unlubricated Filtered, lubricated air
Assembly position	Any
Medium temperature	0 ... 60 °C
Product weight	18.7 g
Materials information for screw-in stud	Brass
Release ring material data	POM