

Solenoid valve

CPE18-M3H-5LS-QS-10

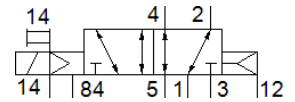
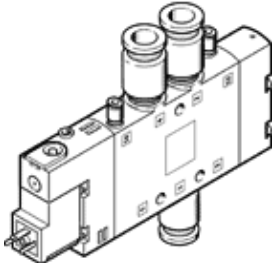
Part number: 163806
Classic - do not use for new projects

FESTO

High component density

This type is suitable for vacuum.

Modern alternatives can be found by entering the first four characters of the type code in the search field.



Data sheet

Feature	Value
Valve function	5/2 monostable
Type of actuation	electrical
Width	18 mm
Standard nominal flow rate	1,000 l/min
Operating pressure MPa	-0.09 ... 1 MPa
Working pressure	-0.9 ... 10 bar
Design structure	Piston slide
Type of reset	Air spring
Authorization	c UL us - Recognized (OL)
Maritime classification	see certificate
CE symbol (see declaration of conformity)	according to EU low voltage guideline
UKCA marking (see declaration of conformity)	To UK instructions for electrical equipment
Protection class	IP65 with plug socket to IEC 60529
Nominal size	8 mm
Exhaust-air function	throttleable
Sealing principle	soft
Assembly position	Any
Manual override	with accessories, detenting Pushing
Type of piloting	Piloted
Pilot air supply	external
Flow direction	reversible
Valve position identification	Label holder
Lap	Positive overlap
Pilot pressure MPa	0.25 ... 1 MPa
Pilot pressure	2.5 ... 10 bar
Switching time off	20 ms
Switching time on	26 ms
Duty cycle	100 %
Max. positive test pulse with logic 0	3,300 µs
Max. negative test pulse with logic 1	3,100 µs
Characteristic coil data	230 V AC: 50/60 Hz, pick-up power 3 VA, holding power 2.4 VA
Permissible voltage fluctuation	-15 % / +10 %
Operating medium	Compressed air in accordance with ISO8573-1:2010 [7:4:4]
Note on operating and pilot medium	Lubricated operation possible (subsequently required for further operation)
Vibration resistance	Transport application test at severity level 2 in accordance with FN 942017-4 and EN 60068-2-6

Feature	Value
Shock resistance	Shock test with severity level 2 in accordance with FN 942017-5 and EN 60068-2-27
Corrosion resistance classification CRC	2 - Moderate corrosion stress
PWIS conformity	VDMA24364-B1/B2-L
Medium temperature	-5 ... 50 °C
Pilot medium	Compressed air in accordance with ISO8573-1:2010 [7:4:4]
Ambient temperature	-5 ... 50 °C
Electrical connection	Plug pattern type C to EN 175301-803
Mounting type	with through hole
Pilot exhaust port 82	M5
Pilot exhaust port 84	M5
Pilot air port 12	M5
Pilot air port 14	M5
Pneumatic connection, port 1	QS-10
Pneumatic connection, port 2	QS-10
Pneumatic connection, port 3	G1/4
Pneumatic connection, port 4	QS-10
Pneumatic connection, port 5	G1/4
Materials note	Conforms to RoHS
Material seals	NBR
Material housing	Aluminum die cast