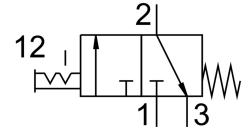
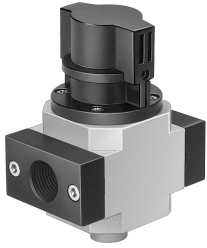


Shut off valve HE-1/2-D-MIDI

Part number: 162810

FESTO



Data sheet

Feature	Value
Structural design	Piston gate valve
Actuation type	Manual
Sealing principle	Soft
Exhaust air function	Without flow control option
Manual override	None
Valve function	3/2, bistable
Operating pressure	0 bar...16 bar
C value	17 l/sbar
b-value	0.3
Standard nominal flow rate	3600 l/min
Operating medium	Compressed air as per ISO 8573-1:2010 [7:4:4] Inert gas
Information on operating and pilot media	Operation with oil lubrication possible (required for further use)
Corrosion resistance class (CRC)	2 - Moderate corrosion stress
Note on materials	RoHS-compliant
LABS (PWIS) conformity	VDMA24364-B1/B2-L
Temperature of medium	-10 °C...60 °C
Ambient temperature	-10 °C...60 °C
Type of mounting	Line installation With accessories
Mounting position	Any
Flow direction	Non-reversible
Product weight	511 g
Pneumatic connection 1	G1/2
Pneumatic connection 2	G1/2
Pneumatic connection 3	G1/4
Air quality class at the output	Compressed air as per ISO 8573-1:2010 [7:4:4] Inert gas
Seals material	NBR
Housing material	Die-cast aluminum