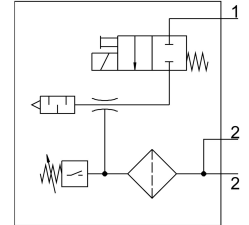


# Vacuum generator VADM-300-N

Part number: 162523

FESTO



## Data sheet

Feature	Value
Nominal width of Laval nozzle	3 mm
Width dimension	22 mm
Muffler construction type	Closed
Mounting position	Any
Ejector characteristics	High vacuum
Grade of filtration	40 µm
Manual override	Non-detenting
Integrated function	Shut off valve, electric Compressed air filter Vacuum switch
Measured variable	Relative pressure
Measuring principle	Piezoresistive
Switching element function	N/O contact
Switching function	Threshold value comparator
Valve function	Closed
Reverse polarity protection	for all electrical connections
Display type	LED
Setting range hysteresis	-50 kPa...-5 kPa -0.5 bar...-0.05 bar
Hysteresis setting range	-7.25 psi...-0.725 psi
Setting options	Potentiometer
Switching status indication	Optical
Setting range threshold value	-90 kPa...0 kPa -0.9 bar...0 bar
Threshold value setting range	-13.05 psi...0 psi
Operating pressure	0.2 MPa...0.8 MPa 2 bar...8 bar 29 psi...116 psi
Max. vacuum	85 %
Nominal operating pressure	0.6 MPa 6 bar 87 psi

Feature	Value
Air supply time at nominal operating pressure	0.26 s
DC operating voltage range	21.6 V...26.4 V
Duty cycle	100%
Switching output	NPN
Certification	RCM compliance mark c UL us - Recognized (OL)
CE marking (see declaration of conformity)	As per EU EMC directive
Operating medium	Compressed air as per ISO 8573-1:2010 [7:4:4]
Information on operating and pilot media	Operation with oil lubrication not possible
Corrosion resistance class (CRC)	2 - Moderate corrosion stress
LABS (PWIS) conformity	VDMA24364-B1/B2-L
Temperature of medium	0 °C...60 °C
Degree of protection	IP65
Ambient temperature	0 °C...50 °C
Product weight	350 g
Pressure measuring range	0 MPa...0.1 MPa 0 bar...1 bar 0 psi...14.5 psi
Electrical connection	4-pin M8x1 Plug
Type of mounting	Optionally: With through-hole With internal thread
Pneumatic connection 1	G1/4
Pneumatic connection 3	Pneumatic muffler integrated
Vacuum connection	G3/8
Note on materials	RoHS-compliant
Seals material	NBR
Female nozzle material	Brass, nickel-plated
Compressed air filter material	PA
Material of filter housing	PC
Housing material	Wrought aluminum alloy
Muffler material	PE POM
Material of piston	POM
Material of jet nozzle	Brass, nickel-plated